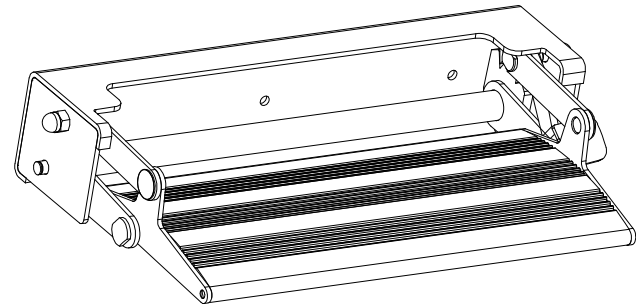
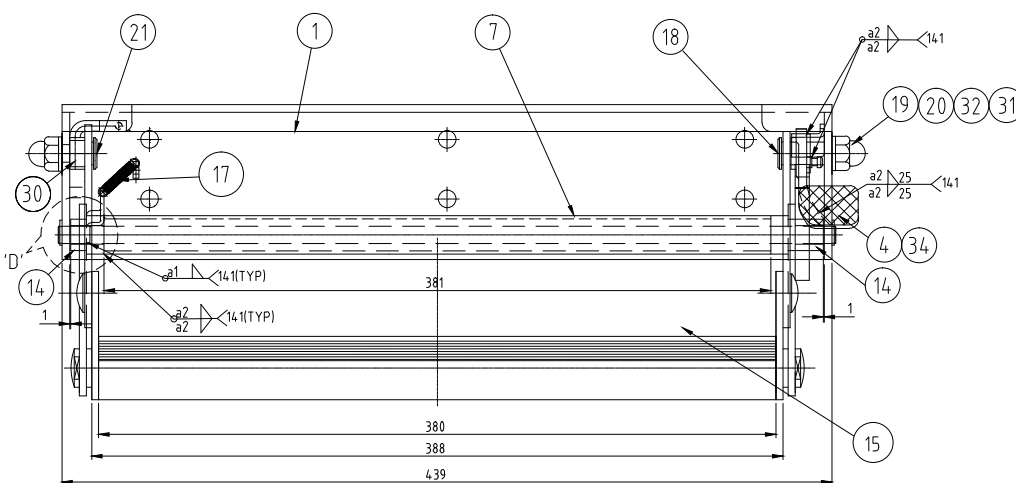
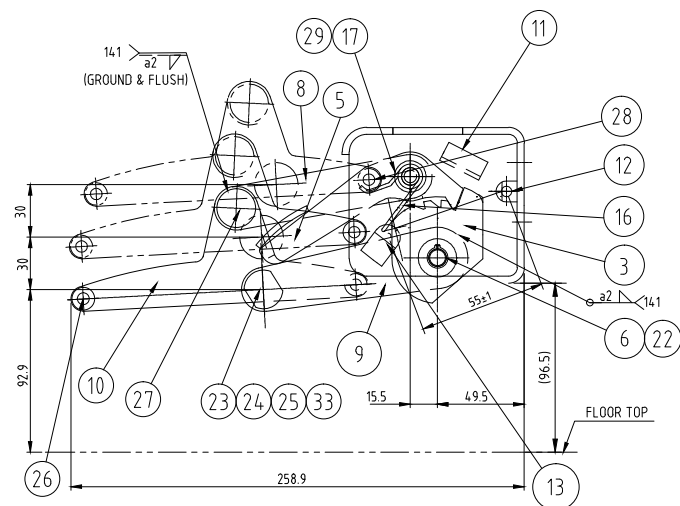
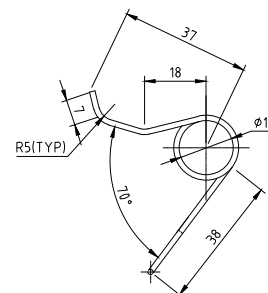
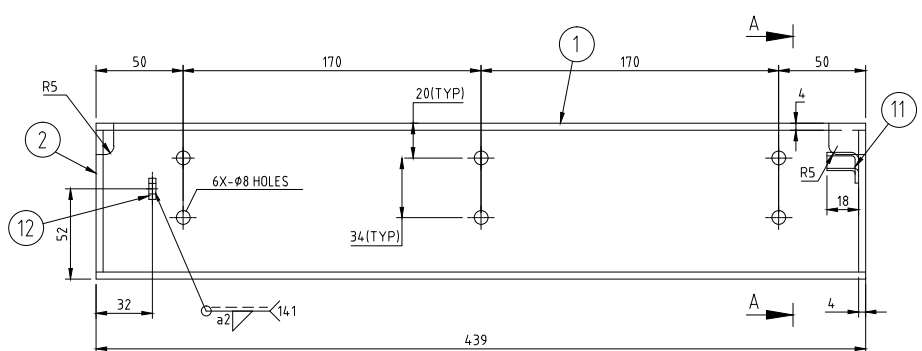


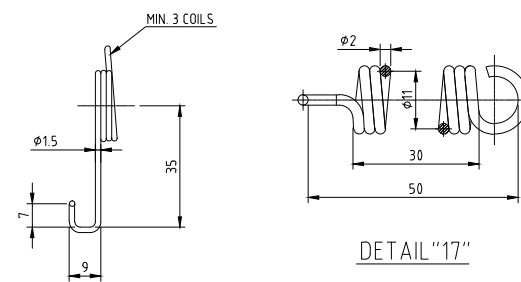
UN CONTROLLED



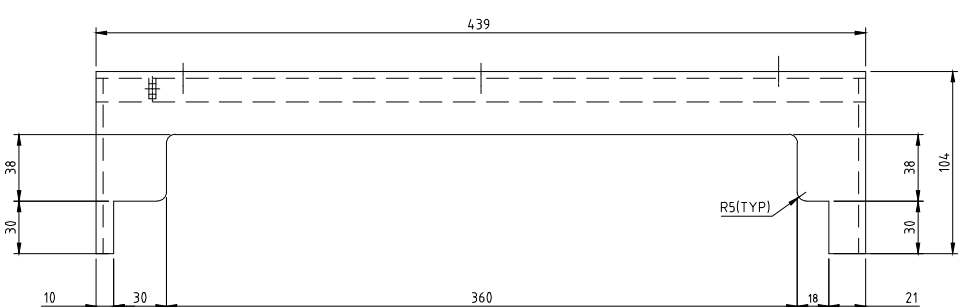
ISOMETRIC VIEW



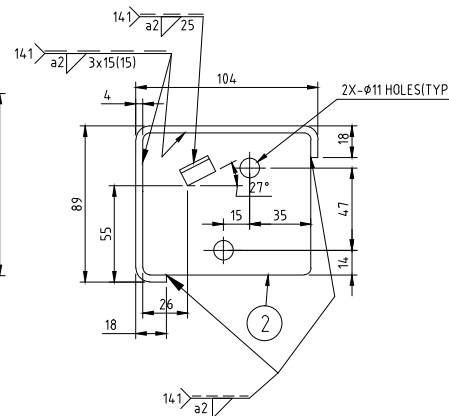
DETAIL "16"



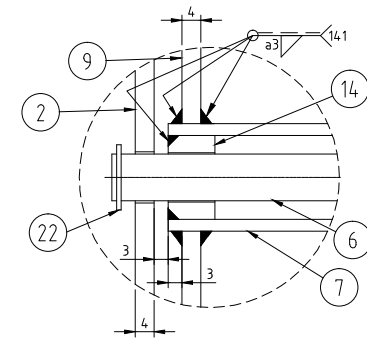
DETAIL "17"



DETAIL "1 & 2"



SECTION A-A



DETAIL "D"

NOTE:

1. ALL DIMENSIONS ARE IN mm.
2. THE FOOT REST ASSY SHALL CONFORM TO TDC DOC. NO. GR/TD/5012.
3. THE EXPOSED SURFACES OF ITEM 1 & 2 SHALL BE BUFF TO MIRROR (NO.8) FINISH AS PER ASTM A480.
ALTERNATELY MAY BE SUPPLIED WITH Ni-Cr PLATING.
4. REMOVE ALL SHARP EDGES AND BURRS.
5. ALL WELDS SHALL BE PICKLED AND PASSIVATED AFTER COMPLETE WELDING.
6. ITEM NO. 32 MAY BE USED IF REQUIRED FOR PROPER FUNCTIONING OF ASSY.
7. SPRINGS SHALL BE GALVANIZED & CHROMATE PASSIVATED.
8. ITEM-15 FOOT REST SHALL BE ANODIZED AS PER IS:1868 TO Gr. AC15.
9. THE MATING SURFACES OF ITEM 15 SHALL BE PAINTED BEFORE ASSY TO AVOID BI-METALLIC CORROSION.
COLOUR: ALUMINIUM METAL COLOUR
10. SAMPLE APPROVAL SHALL BE OBTAINED BEFORE BULK SUPPLIES.



ITEM-17



ITEM-16

3			2					1				
MACHING DEVIATIONS FOR LINEAR DIMENSIONS			RANGE	0 - 6	6 - 30	30 - 120	120 - 315	315-1000	1000-2000	2000-4000	ABOVE 4000	RA
TOLERANCE				+0.1	+0.2	+0.3	+0.5	+0.8	+1.2	+2	+3	~
FOR DIMENSIONAL TOLERANCES OF SHEET METAL PARTS AND WELDED STRUCTURES, REFER STD. 0.227												
UNSPECIFIED TOLERANCE FOR LINEAR AND ANGULAR DIMENSIONS REF. S. 202 (P1-1) (MEDIUM)									QUALITY OF WELD JOINTS REF. RD. 230 MEDIUM			
VALUES OF SURFACE TEXTURE SHALL BE AS PER COMPANY STD. S. 1012 C												
WELDING SHALL BE CARRIED OUT AS PER IS. 9595-96									STATUS:		PROTO/PRODUCTION	

34	1	525-18085-34	PEDDLE ASSY(CONSISTS OF ITEM 4, 5, 28 & 29)	-	-
33	2	525-18085-33	SPECIAL WASHER	-	SUS304/AISI304
32	2	-----	PLAIN WASHER	A11	IS-2016-(TAB-2), MAT:IS-1367(P-14),SS
31	2	-----	SPRING WASHER	B8	IS-3063,MAT:IS-1367 (P-14) , SS
30	1	525-18085-30	BUSH	-	SUS304/AISI304
29	1	525-18085-29	BUSH	-	SUS304/AISI304
28	1	525-18085-28	SPRING REST	-	SUS304/AISI304
27	2	525-18085-27	PIN	-	SUS304/AISI304
26	4	-----	CROSS RECESSED CSK SCREW	M6X16	IS-7985/MAT: IS-1367 (P-14) / Gr-A2-70 SS
25	2	-----	HEX. NUT WITH NYLOC INSERT	M8	ISO-7040, MAT:IS-1367 (P-14),Gr-A2-70 SS
24	2	-----	PLAIN WASHER	A9	IS-2016-(TAB-2) MAT: IS-1367(P-14), SS
23	2	525-18085-23	FLAT HEAD PIN WITH THREAD	-	SUS304/AISI304
22	2	-----	CIRCLIP	10X1IN	IS-3075(PART-1)
21	1	525-18085-21	FLAT HEAD PIN WITH THREAD (OTHER SIDE)	-	SUS304/AISI304
20	2	-----	DOMED CAP NUT	M10	IS-7790, SS
19	2	-----	SPRING WASHER	B10	IS-3063, MAT: IS-1367(P-14),SS
18	1	525-18085-18	FLAT HEAD PIN WITH THREAD (GEAR SIDE)	-	SUS304/AISI304
17	1	525-18085-17	HELICAL COILED EXTENSION SPRING (STIFFNESS 11 N/mm)	Ø11X2WDX50L	IS-7907 (PART-1) MAT: IS-4454, PART-2), Gr:TD (SPRING STEEL)
16	1	525-18085-16	HELICAL TORSION SPRING (NO. OF COILS=3)	17 ODX15WD	MAT:-IS-4454-(PART-2) Gr:TD (SPRING STEEL)
15	1	525-18085-15	FOOT REST	-	AL ALLOY CASTING Gr:4600 AS PER IS- 617
14	2	525-18085-14	COLLAR	Ø18	SUS304/AISI304
13	1	525-18085-13	SPRING CLAMPING PLATE	2 THK	SUS304/AISI304
12	1	525-18085-12	SPRING HOLDER	4 THK	SUS304/AISI304
11	1	525-18085-11	STOPPER	2 THK	SUS304/AISI304
10	2	525-18085-10	FOOT REST SIDE PLATE	4 THK	SUS304/AISI304
9	2	525-18085-09	GEAR LINK-PLATE	4 THK	SUS304/AISI304
8	2	525-18085-08	LINK-PLATE	4 THK	SUS304/AISI304
7	1	525-18085-07	PIPE, L=425	23 ODX2.5WT	SUS304/AISI304
6	1	525-18085-06	ROD	Ø10X446L	SUS304/AISI304
5	1	525-18085-05	FOOT PEDAL PLATE	6 THK	SUS304/AISI304
4	1	525-18085-04	FOOT PEDAL	3 THK	SUS304/AISI304
3	1	525-18085-03	GEAR RATCHET	8 THK	SUS304/AISI304
2	2	525-18085-02	PANEL END PLATES	4 THK	SUS304/AISI304
1	1	525-18085-01	BASE PANEL	4 THK	SUS304/AISI304

SL.No	QTY	PART / STOCK No.	DESCRIPTION	SIZE	COMPANY STD./S	WT. (Kg)
			MUMBAI METRO CARS L2 & L7	MATERIAL		
△ △ △ △ △			PRODUCT			
			REF DRG			
			MATERIAL			
			HEAT TREAT	APPD	Agate-P.V.	12.03.2020
			SURFACE TREAT	REVD	M. Siva Subbar	12.03.2020
			TITLE	CHKD	M. Siva Subbar	12.03.2020
				DRAWN	Pravinakalathur	12.03.2020
				SCALE	1 OF 2	WT.(kg)
ALT.NO.	ECON NO/CHANGES	DATE	BY	CHKD	APPD	NTS
BOML BEML LIMITED BEHIND THE BEML BUILDING						ALT
525-18085					-	

[illegible]