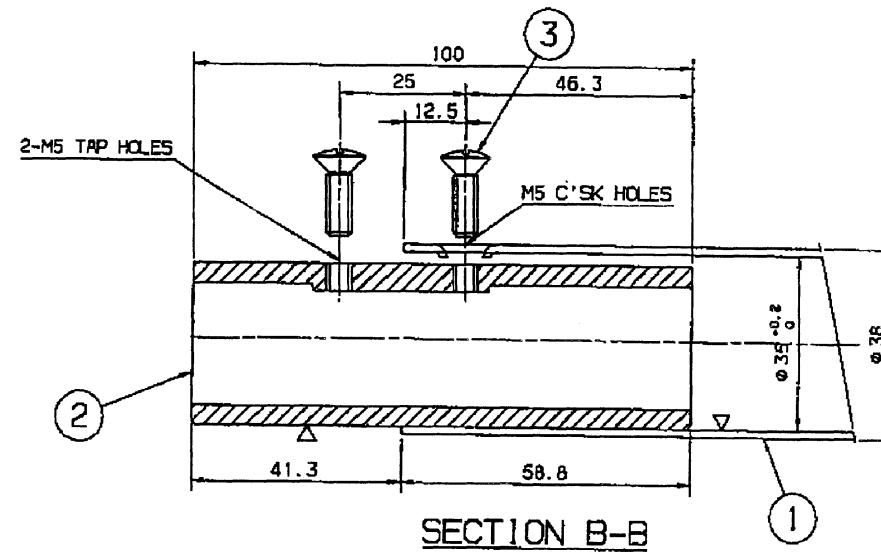
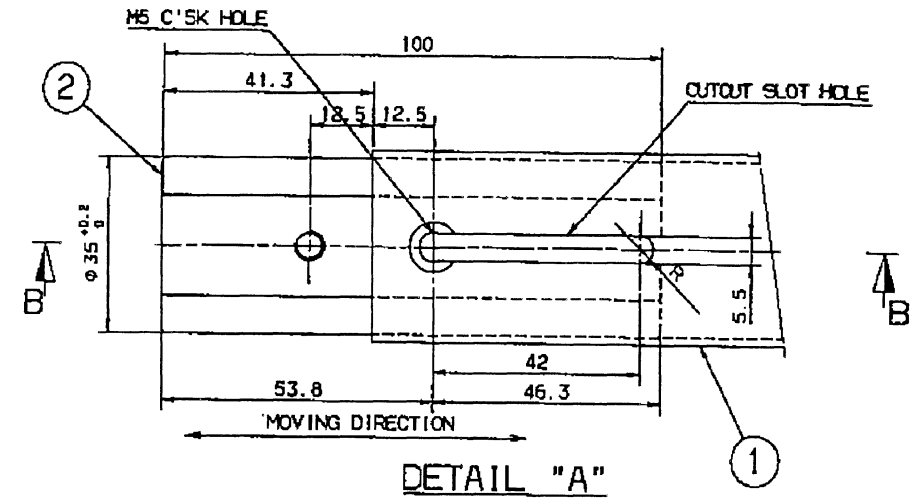
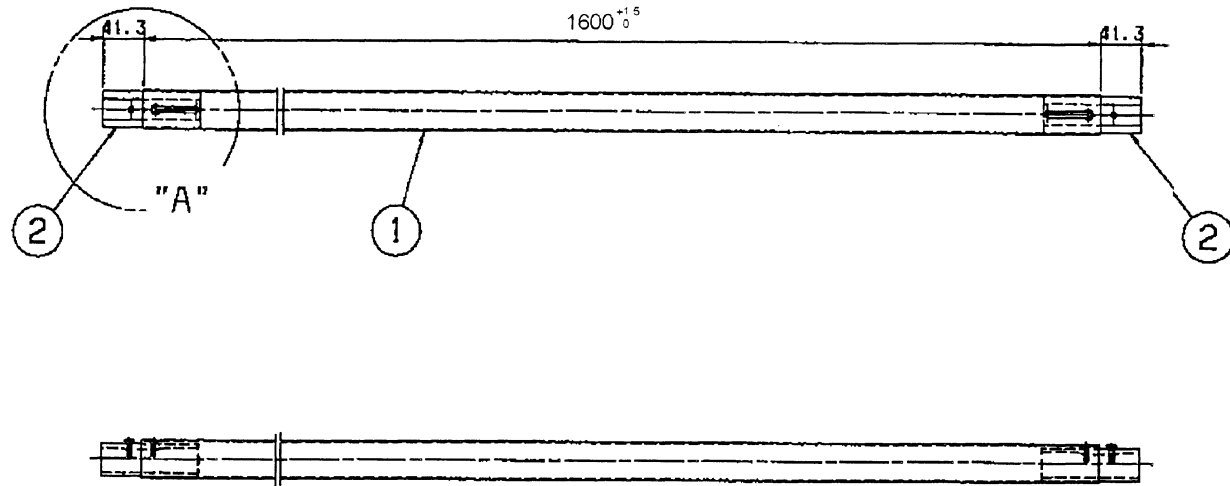


THIS DOCUMENT IS THE EXCLUSIVE PROPERTY OF BEM & CONTAINS CONFIDENTIAL INFORMATION. THIS DOCUMENT OR ITS CONTENTS SHALL NOT BE USED, REPRODUCED OR DISCLOSED IN WHOLE OR IN PART, WITHOUT PRIOR WRITTEN PERMISSION OF BEM. THIS DOCUMENT & ALL ITS COPIES SHALL BE RETURNED TO BEM ON DEMAND. DRAWING RELEASED FROM PLY. PHYSICAL SIGNATURE NOT REQUIRED.

GRADE No.	VALUE	SYMBOL
N1	0.025	
N2	0.05	
N3	0.1	
N4	0.2	
N5	0.4	
N6	0.8	
N7	1.6	
N8	3.2	
N9	6.3	
N10	12.5	
N11	25	
N12	50	
ROUGHNESS		










UNCONTROLLED

NOTE:

1. ASSEMBLY SHALL CONFORM TO PTS DOC. No. GR/TD/3015.
2. THE FIRST REMOVAL PREVAILING TORQUE OF NYLOK IS 3.5 kg.cm FOR M5 SCREW.

MACHINING DEVIATIONS FOR LINEAR DIMENSIONS	RANGE	0 - 6	6 - 30	30 - 120	120 - 315	315-1000	1000-2000	2000-4000	ABOVE 4000	RA
TOLERANCE		±0.1	±0.2	±0.3	±0.5	±0.8	±1.2	±2	±3	~
FOR DIMENSIONAL TOLERANCES OF SHEET METAL PARTS AND WELDED STRUCTURES, REFER STD. RD-227										
UNSPECIFIED TOLERANCE FOR LINEAR AND ANGULAR DIMENSIONS REF. IS 2102 (PT-1) (MEDIUM)										QUALITY OF WELD JOINTS REF. RD 230 MEDIUM
VALUES OF SURFACE TEXTURE SHALL BE AS PER COMPANY STD. DS 1012 C										
WELDING SHALL BE CARRIED OUT AS PER IS: 9595-96										
STATUS										PRODUCTION

3	4	RFS8160516	HEX SOCKET RAISED CSK HEAD SCREW WITH PRE APPLIED NYLOK BLUE PATCH		M5x16	IS: 7486-2005 FOR HEX SOCKET M4 HEAD IS: 6761-94 / MATL IS: 1367-(P14)-84, GR:A2-70		
2	2	909-29043-02	JOINT, PIN		Ø35	SUS 304		
1	1	909-29043-01	PIPE		Ø38x1.5THK	SUS-304		
SL.No.	QTY	PART / STOCK No.		DESCRIPTION	SIZE	COMPANY STD./IS	Wt. (Kg)	
						MATERIAL		
				PRODUCT	DMRC BG METRO CARS			
				REF DRG				
				MATERIAL	-			
				HEAT TREAT	-	APPD	24/10/15	
				SURFACE TREAT	-	REV D		
				TITLE	CHKD		20/10/15	
				GRAB RAIL (A)	DRWN	PURUSHOTHAMAN	05/09/2015	
					SCALE		SHEET	Wt.(Kg)
					NTS		1 OF 1	-
ALT NO	ECN NO/CHANGES		DATE	BY	CHKD	APPD	DRG No	
							909-29043	
				 beml BEML LIMITED		ALT		
						