

COPY RIGHT & CONFIDENTIAL
THIS DOCUMENT IS THE EXCLUSIVE PROPERTY OF BEML & CONTAINS CONFIDENTIAL
INFORMATION. THIS DOCUMENT OR ITS CONTENTS SHALL NOT BE USED, REPRODUCED OR DISCLOSED IN WHOLE OR IN PART,
WITHOUT PRIOR WRITTEN PERMISSION OF BEML. THIS DOCUMENT & ALL ITS COPIES SHALL BE RETURNED TO BEML ON DEMAND
DRAWING RELEASED FROM PLM, PHYSICAL SIGNATURE NOT REQUIRED

N1	0.025	
N2	0.05	
N3	0.1	
N4	0.2	
N5	0.4	
N6	0.8	
N7	1.6	
N8	3.2	
N9	6.3	
N10	12.5	
N11	25	
N12	50	
GRADE No.		
VALUE		
SYMBOL		
SURFACE ROUGHNESS		

MACHINING DEVIATIONS FOR LINEAR DIMENSIONS	RANGE	0 – 6	6 – 30	30 – 120	120 – 315	315-1000	1000-2000	2000-4000	ABOVE 4000	RA
	TOLERANCE	±0.1	±0.2	±0.3	±0.5	±0.8	±1.2	±2	±3	~
FOR DIMENSIONAL TOLERANCES OF SHEET METAL PARTS AND WELDED STRUCTURES, REFER STD. RD-227										
UNSPECIFIED TOLERANCE FOR LINEAR AND ANGULAR DIMENSIONS REF. IS 2102 (PT-1) (MEDIUM)							QUALITY OF WELD JOINTS REF, RD 230 MEDIUM			
VALUES OF SURFACE TEXTURE SHALL BE AS PER COMPANY STD DS. 1012.C.						STATUS:	PROTO			
WELDING SHALL BE CARRIED OUT AS PER IS: 9595-96										

ILLUMINATED PUSH BUTTON - CLEAR Ø35

TECHNICAL REQUIREMENTS:

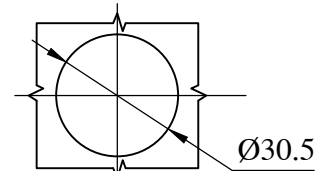
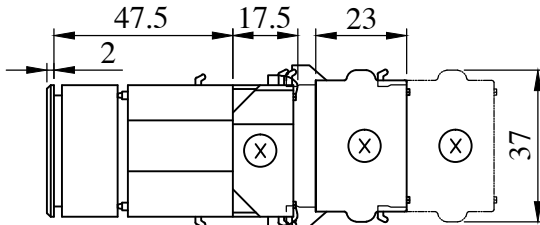
1. TYPE : ILLUMINATED PUSH BUTTON ACTUATOR FOR FLUSH MOUNTING WITH MAINTAINED ACTION (PUSH TO ON & PUSH TO OFF
2. RATED OPERATING VOLTAGE : 110 V DC
3. LENS : PLASTIC CLEAR
4. BULB : SINGLE LED LAMP 110V DC, SUITABLE TO CAP SIZE - BA9S, CLEAR
5. TYPE OF SWITCHING ELEMENT : 2 NO WITH SCREW TERMINALS (SCH) QTY. (2 NOS.)
6. SWITCHING SYSTEM : SNAP ACTION SWITCHING ELEMENT WITH CONTACT

RATING OF 2.5 A AT 110V DC.




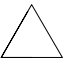



7. CONFORMING TO STANDARD : IEC : 60947-5-1 / IS 13947-5-1
8. DEGREE OF PROTECTION: IP65
9. MAKE & TYPE :

UN CONTROLLED COPY

- M/S EAO : PART NO. - 704.062.718 (QTY. 1NO) + 704.900.3 (QTY. 2NOS.) + 10-1422.1179 (QTY. 1NOS.)



MOUNTING HOLE
DIMENSION ON PANEL

SL.No.	QTY	PART / STOCK No.	DESCRIPTION				SIZE	COMPANY STD./I.S		Wt. (Kg)		
MATERIAL												
						PRODUCT	8W CMV SG - NMML1					
						REF DRG						
						MATERIAL						
						HEAT TREAT.			APPD	K.C.SHASHIKANTH		
						SURFACE TREAT.			REVD	S.JAYARAMU		
						TITLE	ILLUMINATED PUSH BUTTON 110V DC, Ø35 (CLEAR)			CHKD	S.JAYARAMU	
									DRWN	J K YADAV		
						SCALE			SHEET	Wt.(Kg)		
ALT.NO.	ECN NO/CHANGES	DATE	BY	CHKD	APPD				OF		0	
						 BEM NEW FRONTIERS. NEW DREAMS			BEML LIMITED		DRG No.	
							897-21257				