

② QTY. FOR AC/DC EMU/B2/ASR,
AC/DC EMU/C2/ASR, AC/DC EMU/D2/
ASR, AC EMU/M/ASR, AC EMU/C/ASR,
& AC EMU/D/ASR IN COL-I AND ASSY.
DRG. NO. AC EMU/C/ASR-0-5-001
ADDED. *[Signature]*
SSE/D *[Signature]* SME/BD

DESCRIPTION OF JIG / TOOL	JIG/TOOL NO.	▽ ROUGH MACHINED	① ROUGH CLEANED
		▽▽ FINISH MACHINED	⑱ CHAMFERED
		▽▽▽ FINE FINISH MACHINED	①b BURRS REMOVED

ALTERATIONS

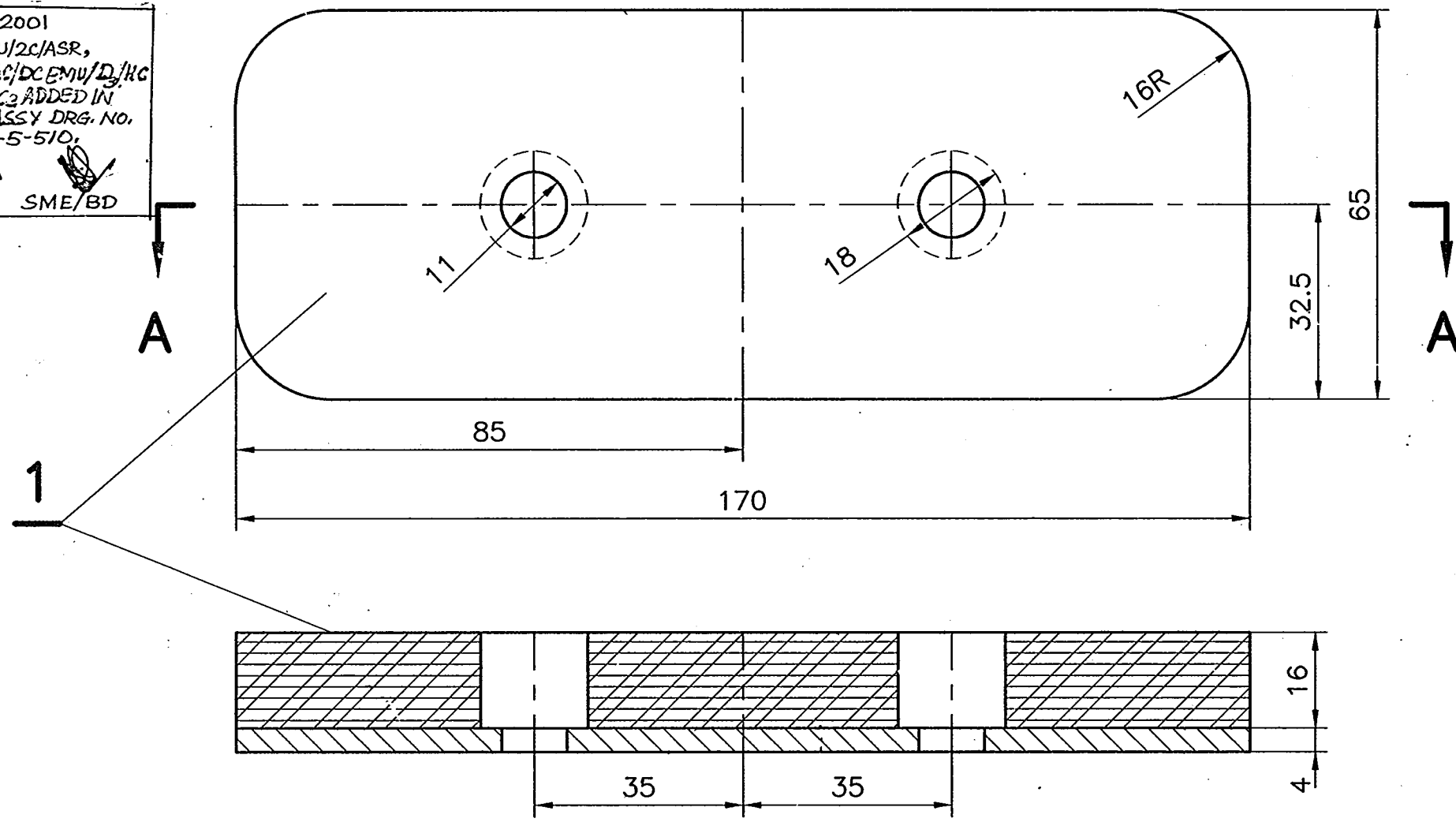
(a) 12/99

FOR AC/DC EMU TYPE
OF COACHES REVISED .
QTY. FOR AC/DC EMU/D₂/HC
ADDED IN COL. I.

~~SS~~ ~~SS~~
SSE/D SME/BD

③ 12/2001
QTY. FOR EMU/2C/ASR,
EMU/2D/ASR, AC/DC EMU/D3/KC
& AC/DC EMU/C3 ADDED IN
COL. 1 WITH ASSY DRG. NO.
DMU/DPC5-0-5-510.
SSE/D 12/2K1 SME/BD

(b) 12/2000
IN COL-1 QTY. FOR DC/EMUM
/ASR, DCEMU/C/ASR, DCEMU
/D/ASR & DCEMU/D3/HC
ADDED. FOR ITEM-1 MAT.
SPEC. FOR STEEL SHEET
UPDATED.
SSE/ID SME/BD



▲ DMU/DPC5 } WITH AIR SUSPN.
 DMU/TC4 }
 DMU/DTC4 }
 AC/DC EMU/M2, AC/DC EMU/C2, AC/DC EMU/D3/HC
 AC/DC EMU/D2, AC EMU/M/ASR,
 AC EMU/C/ASR, AC EMU/D/ASR, AC/DC EMU/D2/HC
 DC/EMU/M/ASR, DC EMU/C/ASR, DC EMU/D/ASR,
 EMU/2C/ASR, EMU/2D/ASR, AC/DC EMU/D3/HC,
 AC/DC EMU/C3

SECTION- AA

● SYNTHETIC RUBBER BONDED WITH STEEL SHEET
TO IS:2062-99 Fe 410 WC

[illegible]